

A dynamic photograph of two Porsche cars on a racetrack. In the foreground, a dark-colored Porsche Carrera GT is shown from a rear three-quarter view, driving away from the camera. It features a large rear wing and 'PORSCHE EXPERIENCE CENTER HOCKENHEIMRING' branding on the side. In the background, another Porsche, possibly a 911, is also driving away. The track is asphalt with visible tire marks, and the background shows a modern building and a clear sky.

**WE SPEED UP YOUR EMOTIONS.**

— Porsche Experience Center Hockenheimring

For fuel consumption and CO<sub>2</sub> emissions, please refer to page 44.



# PORSCHE

---

## EXPERIENCE CENTER HOCKENHEIMRING

The models featured in this publication are approved for road use in Germany. Some items of equipment are available as extra-cost options only. The availability of models and options may vary from market to market due to local restrictions and regulations. For information on standard and optional equipment, please consult your Porsche Centre. All information regarding construction, features, design, performance, dimensions, weight, fuel consumption and running costs is correct to the best of our knowledge at the time of going to print (01/25). Porsche reserves the right to alter specifications, equipment and delivery scopes without prior notice. Colours may differ from those illustrated. Errors and omissions excepted. For the disclaimer in every language please refer to [www.porsche.com/disclaimer](http://www.porsche.com/disclaimer)

# CONTENT

04

INTRO

05

PORSCHE  
*Experience Center  
Hockenheimring*

09

DRIVING EVENTS  
*On-Road*

20

DRIVING EVENTS  
*Off-Road*

22

RACETRACK  
*Experiences*

25

VEHICLE  
*Collection GT*

31

GASTRONOMY

35

PDS  
*Shop*

37

MEETINGS  
*Events*

43

OUTRO





## You've never been so awake while dreaming. —————

Since the very beginning, everything that the Porsche brand represents has been driven by dreams. Dreams that can be experienced so intensively in one place that they speed up your emotions: welcome to the Porsche Experience Center Hockenheimring.

A Porsche world in the midst of the legendary Hockenheimring race track, just 100km away from our headquarters in Zuffenhausen. Created to make our brand tangible. And to offer all Porsche drivers and fans unique experiences that they will remember for a long time.

---

For fuel consumption and CO<sub>2</sub> emissions, please refer to page 44.



# Name one detail in the picture that does not accelerate your pulse.



Hockenheimring

Porsche Experience Center

Speed charging stations

Dynamic circuit (wet/dry)

Drift circle (wet)

Low friction handling circuit

Handling track

Steep turn

Drift circle (dry)

Off-Road circuit

Water passage



# Carpe diem. Redefined. ---

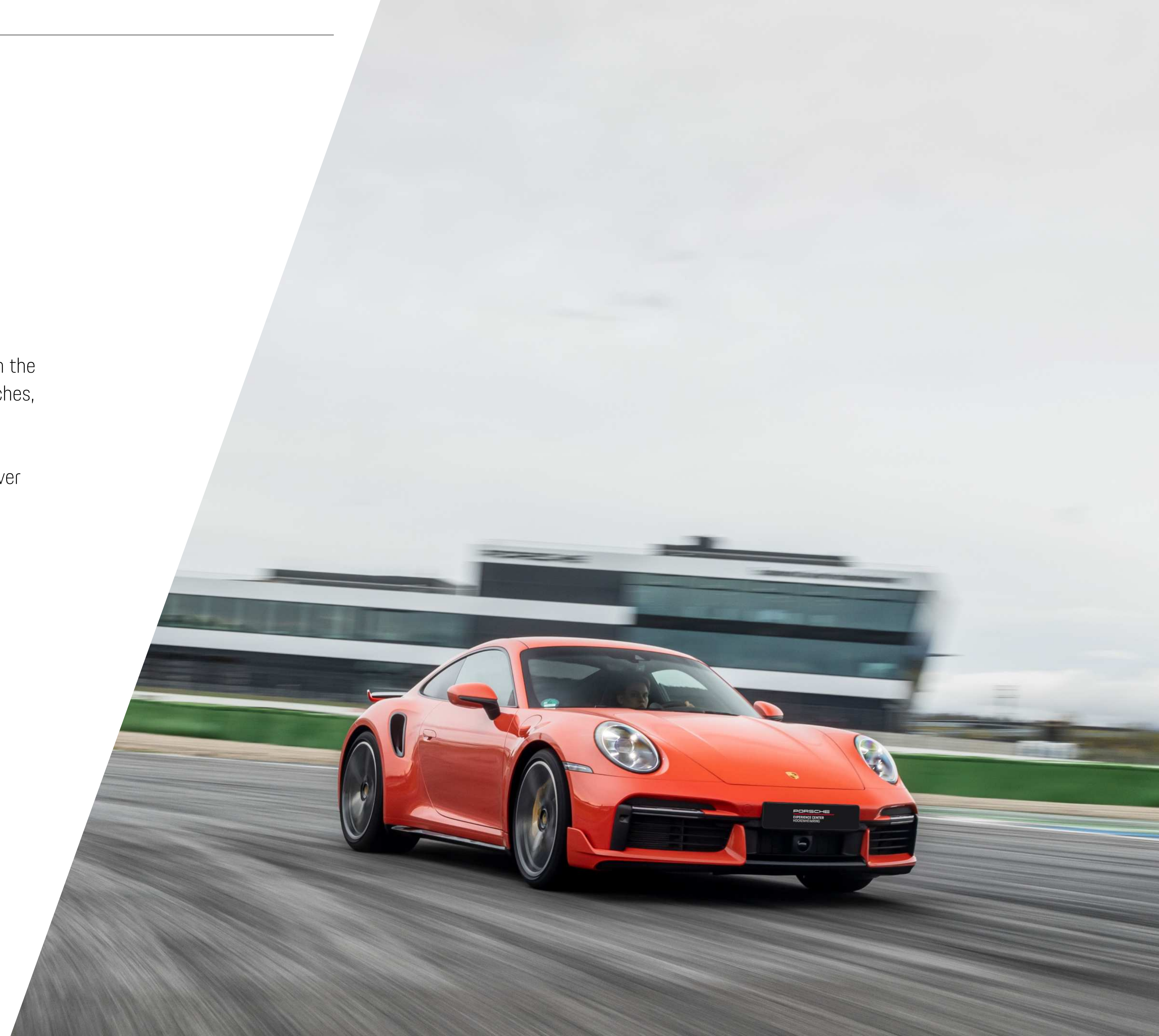
Whether you want to spend an unforgettable time with friends, family or on business – we adapt individually to you and your wishes.

Discover Porsche in all its facets and in every detail on our 170,000m<sup>2</sup> site in the heart of the Hockenheimring: on our own handling track, on 6 dynamic stretches, on our Off-Road circuit.

Choose between 90 different Porsche models available. Become a racing driver yourself in our simulators. Enjoy culinary highlights in a unique environment. Use our numerous, flexibly expandable conference rooms and event areas for events in our 4,500m<sup>2</sup> Customer Centre. There are as few limits to Porsche performance as there are to your wishes.

---

For fuel consumption and CO<sub>2</sub> emissions, please refer to page 44.







# Our drive: ————— your fascination.

No matter which model, you will always recognise a Porsche. From its performance and by its very own standards, which must be exceeded again and again.

Our team is no different. Because it is the shared fascination for the Porsche brand that drives us every day and makes our work more than just a job. With the highest level of skill and motivation, the organisation

team, instructors, customer care agents, shop assistants, catering team, workshop team and facility management pursue only one goal every day: putting a twinkle in your eye.

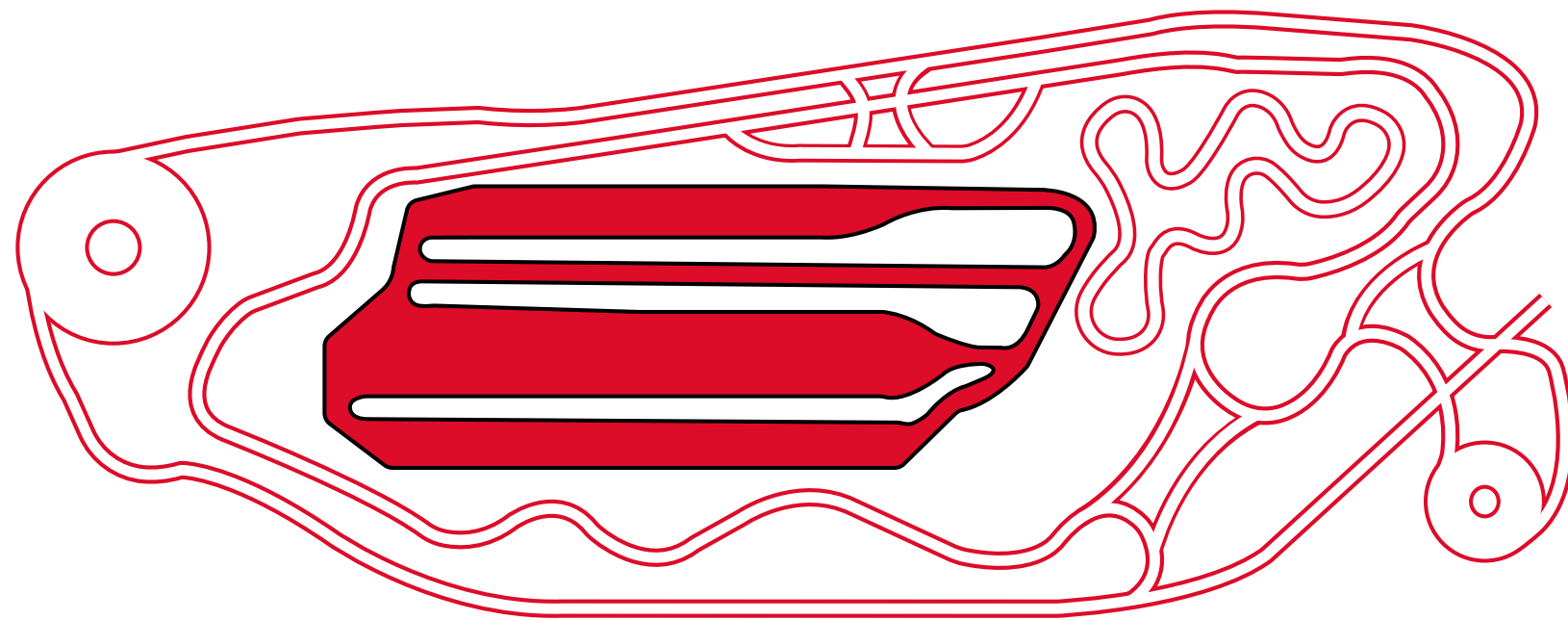
—————  
For fuel consumption and CO<sub>2</sub> emissions, please refer to pages 44.



# The only thing missing? A podium. ———

Rarely have we met drivers or fans who have not dreamed of driving a Porsche as a child. A dream that we make a reality in various ways with our driving events.

Under highly professional conditions, you can experience all Porsche models under the guidance of our expert instructors: in the front passenger seat, behind the wheel or during individual coaching sessions.



Learn to control your speed on our handling track, master tight bends and chicanes. Intensify your driving skills on different dynamic stretches, such as a skid plate or drift circles.

---

For fuel consumption and CO<sub>2</sub> emissions, please refer to page 44.





**When endorphins and adrenaline fight for pole position.**

Our driving offers – bookable in our online shop.



For fuel consumption and CO<sub>2</sub> emissions, please refer to page 44.



# Co-Pilot. —————

For most people, the mere sight of a Porsche 911 is enough to give them goosebumps. Now imagine experiencing its full potential as a passenger alongside a professional instructor. Demanding bends, chicanes and speeds of up to 200km/h on the straights make a ride on our handling track an experience that not only lets you discover the limits of a Porsche 911, but also those of your emotions.

*Driving time: 15 minutes*  
*Total time: 1 hour*





# Co-Pilot GT. —

Our GT-models are more than sporting statements. They are a tribute to motorsport. You will discover them for yourself when you experience pure motorsport as a co-driver alongside a professional instructor. Because there is a small catch to this driving experience: You will find it difficult to get out again.

*Driving time: 15 minutes*  
*Total time: 45 minutes*

For fuel consumption and CO<sub>2</sub> emissions,  
please refer to page 44.







## Pilot Basis. ---

Challenge a Porsche under safe conditions. The program combines learning about and identifying unstable driving situations and how you can safely control them. Under professional guidance of one of our instructors you can expect an exciting driving experience. Choose your desired Porsche model and steer it through different driving sections, including lane changes without braking and a slalom course.

Alternatively, you can complete the driving program in your own Porsche and get to know it even better in extreme situations.

*Driving time: 60 minutes*

*Total time: 2 hours*

---

For fuel consumption and CO<sub>2</sub> emissions, please refer to page 44.



# Pilot. ———

Would you prefer to take the wheel yourself? Are you searching for your personal racing line? Choose your favourite Porsche model and take your place in the driver's seat. The driving program can also be booked with your own Porsche. After a briefing on the most important basics that have to be observed on a circuit, a professional instructor will show you how to perfectly master curves on our race track. Metre after metre, lap after lap, you work your way up to the racing line, where turning, braking and acceleration points are no longer foreign words, but have become your mother tongue.

*Driving time: 60 minutes*  
*Total time: 2 hours*

For fuel consumption and CO<sub>2</sub> emissions, please refer to page 44.







## Pilot-Mix. —

Whether front, mid, rear-mounted or electric sportscar: decide on your two favourite models, get behind the wheel and after just a few metres on our handling track, you will discover why they are both so fascinating. A professional instructor will show you how to get the most out of both vehicles – and to be rewarded with uncompromising driving pleasure.

**Driving time: 60 minutes**

**Total time: 2 hours**

For fuel consumption and CO<sub>2</sub> emissions, please refer to pages 44.



# Pilot Advanced.

Controlling the dynamism of powerhouses such as the Porsche 911 Turbo or our GT models at their limits requires a high level of driving skill.

After a track and vehicle briefing, an instructor will introduce you to safe vehicle control during a guided drive on the challenging handling track at the Porsche Experience Center. Your training plan? Optimise steering technique and vehicle handling. Set the ideal braking point and successively approach the racing line. A lot of driving pleasure included.

By the way: If you prefer, you can also experience the Pilot Advanced program in your own Porsche Turbo or Porsche GT model.

**Driving time: 60 minutes**

**Total time: 2 hours**

For fuel consumption and CO<sub>2</sub> emissions, please refer to page 44.







## Pilot g-Force. —————

Lots of G-forces promise an unforgettable experience: Choose your desired Porsche model or your own Porsche and you will quickly find out what proper drifting means by using the right steering technique and focusing your eyes on the right place. Under professional guidance of one of our instructors you will learn how to initiate and control unstable driving conditions on our drift circle and low-friction track, while at the same time having plenty of fun.

*Driving time:* 90 minutes

*Total time:* 2,5 hours

---

For fuel consumption and CO<sub>2</sub> emissions, please refer to page 44.



# Accelerate. ---

Anyone with as much sporty performance in their DNA as a Porsche needs a playground to let off steam from time to time. The perfect place for our GT models such as the 718 Cayman GT4 RS or the 911 GT3 RS: our own handling course.

Learn to handle the power of these uncompromisingly sporty models – and to transfer the dynamic performance optimally to the road. A professional instructor is at your side in 1-to-1 coaching, evaluating your driving technique using vehicle data analysis and taking you to your driving limits.

We also offer the Accelerate program with a 718 Cayman GT4 Clubsport Racecar as well as with your own Porsche GT model. You can find further information in our [online shop](#).

**Driving time:** 120 minutes of 1-to-1 coaching

**Total time:** 4 hours

---

For fuel consumption and CO<sub>2</sub> emissions, please refer to page 44.





# Accelerate GT4 Clubsport. —

Book a driving experience that won't let you go. With every single pore, the GT4 Clubsport stands for pure motorsport – learn to tame the power of this exceptional athlete under the guidance of a professional instructor.

Lap by lap, we push you to your driving limit and analyse your driving technique with the help of a vehicle data analysis.

**Driving time:** 120 minutes of 1-to-1 coaching  
**Total time:** 4 hours







## Pilot g-Force GT. —

Want to increase the fun of drifting even more? No problem. Simply challenge the G-forces in one of our GT vehicles. Choose between a Porsche 911 GT3 or 718 Cayman GT4 and take your drifting skills to the next level under the guidance of one of our instructors.

*Driving time: 90 minutes*

*Total time: 2,5 hours*

For fuel consumption and CO<sub>2</sub> emissions, please refer to page 44.



# ADVENTURE CALLING? HERE IS OUR ANSWER.

---

## Our Off-Road circuit.

For fuel consumption and CO<sub>2</sub> emissions, please refer to page 44.





# It ascends steeply uphill – along with your feelings. ———

Whether rocky climb, water crossing, dry river bed, 80% gradient or wooden see-saw: 17 off-road modules are waiting to be mastered by you either with the Cayenne or Macan on our off-road course. Guided by one of our professional instructors, you will get to know the dynamics, agility, safety, comfort and suitability for everyday use of these Porsche models in perhaps the most exciting way.

To top off this adventure, your Pilot Off-Road package includes a ride along with the instructor on our on-road handling course – in the new Porsche Taycan. You are welcome to bring along a companion who will of course share your off-road adventure with you.

Another offer: you are welcome to master the 17-off-road modules in your own Porsche Macan or Cayenne.

**Driving time: 60 minutes**

**Total time: 2.5 hours**

---

For fuel consumption and CO<sub>2</sub> emissions,  
please refer to page 44.





# Why only experience motorsport from the grandstand?

—— Our racetrack experiences – bookable in our online shop.





# Porsche Track Experience

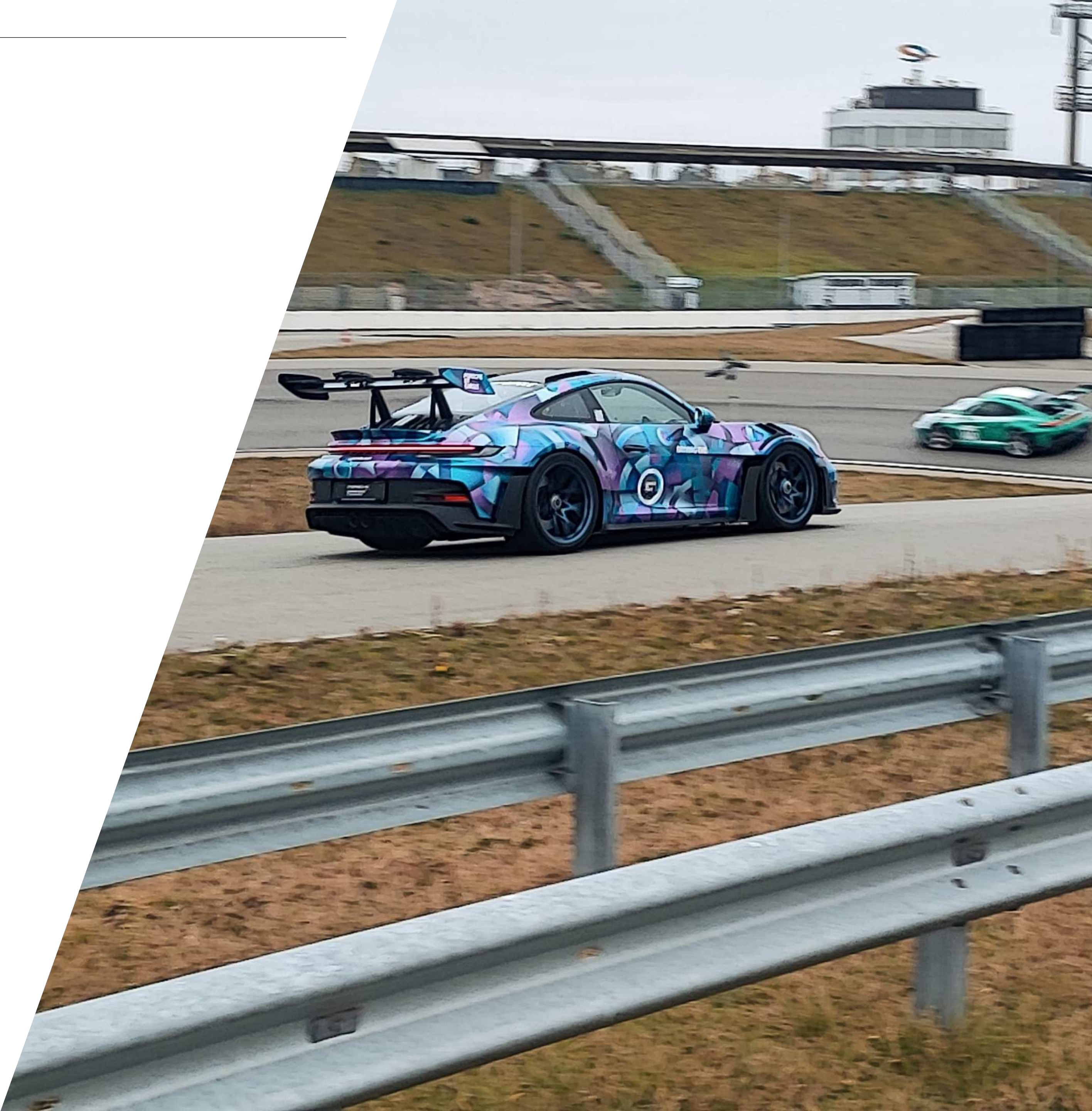
## Race track feeling guaranteed.

The start of a breathtaking journey around the Porsche legend. Immerse yourself in the multifaceted world of Porsche and make your first adrenaline-filled racetrack experiences in the Precision and Performance formats.

	Precision	Performance
Course duration and catering	1 Day, Lunch included	2 Days, 2x Lunch and 1x Dinner included
Qualification	none	Precision
Follow-up courses	Performance and Training specials	Master, Master GT, Master Licence and Training specials
Price per person	from € 2.300 <sup>1</sup> (from € 1.320 <sup>1</sup> with own Porsche)	from € 4.125 <sup>1</sup> (from € 2.300 <sup>1</sup> with own Porsche)
Passenger	from € 150 <sup>1</sup> / day	from € 150 <sup>1</sup> / day

<sup>1)</sup> All prices are inclusive of the statutory value-added tax applicable at the time.

For fuel consumption and CO<sub>2</sub> emissions, please refer to page 44.







# PEC meets GPK Hockenheimring

## Tradition meets modernity.

Whether you are an experienced Track Day driver or a newcomer – experience the traditional Grand Prix circuit of the Hockenheimring up close with guided and free driving. Either with your own Porsche model or now also with one of our pool cars.

As a special highlight, there will be a special edition of the popular event format on 12.06.2025, consisting of a combination of our own PEC handling track in conjunction with the Grand Prix circuit of the Hockenheimring.

<b>Program length:</b>	3:15 h, of which 1:15 h driving activity on the GP circuit.
<b>Price:</b>	€ 360 (incl. VAT) with own Porsche vehicle € 1.430 (incl. VAT) with a basic (up to GTS) model of the PEC € 1.850 (incl. VAT) with a GT or Turbo S model of the PEC
Price (special edition day):	€ 480.00 (incl. VAT) with your own Porsche vehicle € 1,540 (incl. VAT) with a basic (up to GTS) model of the PEC € 1,955 (incl. VAT) with a GT or Turbo S model of the PEC
<b>Dates:</b>	<b>Day slots:</b> 08.08.25   16.10.25 – 10:15, 11:45 or 14:30 <b>Special edition day slot:</b> 12.06.25 – 10:15, 11:45 or 14:30 <b>Evening slots:</b> 10.04.25   06.05.25   04.06.25 – 16:30 or 18:00
<b>Participants:</b>	30 vehicles per appointment and time slot

For fuel consumption and CO<sub>2</sub> emissions, please refer to page 44.

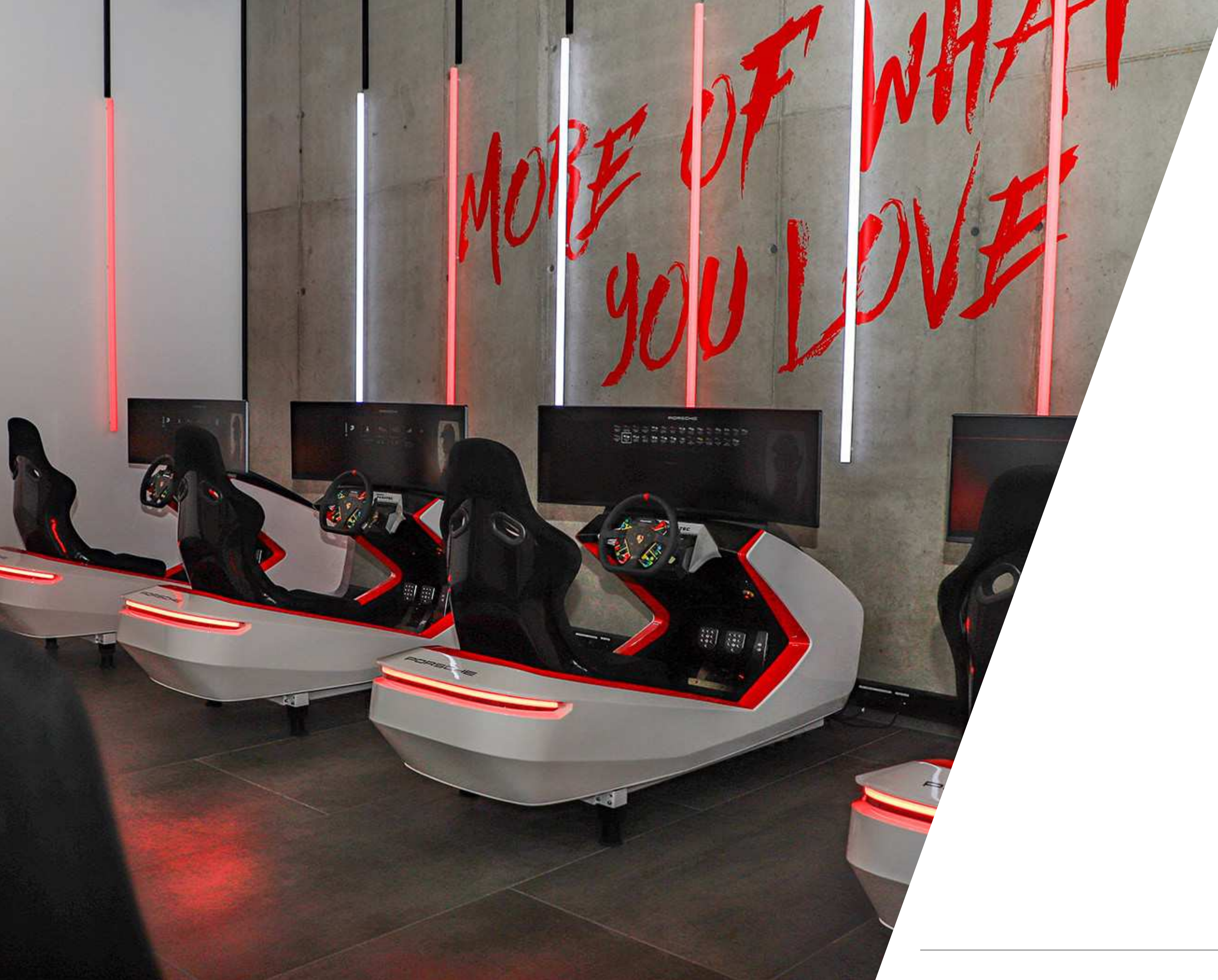


**Gentlemen, please start your engines.**

— Our simulators.







## The biggest difference compared to real racing? You don't need a racing licence. ---

In our driving simulators, you can experience driving pleasure at the ultimate technical level – on request also under the professional guidance of our instructors. Get up close and personal, thanks to highly authentic physical and performance characteristics and a realistic cockpit. The simulators are not just entertainment, but a serious training tool for professionals to improve their driving skills.

Many race tracks around the world are faithfully reproduced and can be experienced with precise digital replicas of our models and race cars. A virtual version of our handling course is a real treat – perfect for a few introductory laps.



# OUR DRIVING- EXPERIENCES

Unforgettable Porsche moments.



## CO-PILOT

Experience the full potential of a Porsche 911 or a Taycan on our handling track. Challenging curves, chicanes and speeds of up to 200 km/h provide pure adrenalin.

€ 200<sup>1</sup> per person



## CO-PILOT GT

The infamous Porsche GT models are an uncompromising commitment to motorsport. Get to know them alongside a professional instructor on our handling track and discover their unbridled power.

€ 300<sup>1</sup> per person



## PILOT BASIS

Under professional guidance, get to know your favourite Porsche sports car in challenging situations under safe conditions.

€ 350<sup>1</sup> per person  
€ 200<sup>1</sup> (with own vehicle)

Visit our online shop now and book an unforgettable driving experience: [booking.porsche-experiencecenter-hockenheimring.de](https://booking.porsche-experiencecenter-hockenheimring.de)



## PILOT

Take the wheel of your favourite Porsche model. After a briefing on the basics, a professional instructor will show you how to master our handling track perfectly.

€ 450<sup>1</sup> per person  
€255<sup>1</sup> (with own vehicle)



## PILOT-MIX

Whether front, mid- or rear engine: Conquer the limits in 2 Porsche models of your choice and let our instructors show you how to get the most out of them.

€ 600<sup>1</sup> per person



## PILOT ADVANCED

Cross the threshold to motorsport in the 911 Turbo or our GT models. An instructor will introduce you to safe vehicle control during a guided drive on our challenging handling track.

€ 975<sup>1</sup> per person  
€ 610<sup>1</sup> (with own vehicle)



## PILOT G-FORCE

Play with the g-forces of your favourite Porsche model and find out what it means to drift properly.

€ 715<sup>1</sup> per person  
€ 445<sup>1</sup> (with own vehicle)





## ACCELERATE

Experience the power of our GT models: a professional instructor will be at your side exclusively, analyses your driving technique using the vehicle data and will push you to your driving limits.

€ 3.450<sup>1</sup> per person  
€ 2.500<sup>1</sup> (with own vehicle)



## ACCELERATE GT4 CLUBSPORT

Learn to control the dynamics of the GT4 Clubsport under the guidance of a professional instructor. Lap after lap, we will push you to your driving limits and discuss your driving technique with the help of a vehicle data analysis.

€ 5.000<sup>1</sup> per person  
€ 4.000<sup>1</sup> (with own vehicle)



## PILOT G-FORCE GT

Choose between a Porsche 911 GT3 or the new 911 GT3 RS and learn under professional guidance of one of our instructors how to hold and initiate unstable driving conditions.

€ 1.250<sup>1</sup> per person  
€ 475<sup>1</sup> (with own GT vehicle)



## OFFROAD

17 off-road modules are waiting for you to either with the Cayenne or the Macan - on our off-road course.

€ 450<sup>1</sup> per person  
€ 255<sup>1</sup> (with own vehicle)

Visit our online shop now and book an unforgettable driving experience: [booking.porsche-experiencecenter-hockenheimring.de](https://booking.porsche-experiencecenter-hockenheimring.de) 



## TRACK EXPERIENCE

Why only experience motorsport from the grandstand? The Precision and Performance formats offer you that pure racetrack feeling. In the middle of the legendary Hockenheimring race track.

from € 2.300<sup>1</sup> per person  
from € 1.320<sup>1</sup> (with own vehicle)



## PEC MEETS GPK HOCKENHEIMRING

Anticipation is the greatest joy. Our special "PEC meets GPK Hockenheimring" will also take place again on 3 dates in 2024.

from € 1.430<sup>1</sup> per person  
from € 360<sup>1</sup> (with own vehicle)



## SIMULATORS

Become a virtual racing driver yourself: Our simulators use detailed replicas of international racetracks and exact digital versions of our Porsche production models and racing cars.

from €45<sup>1</sup> per person

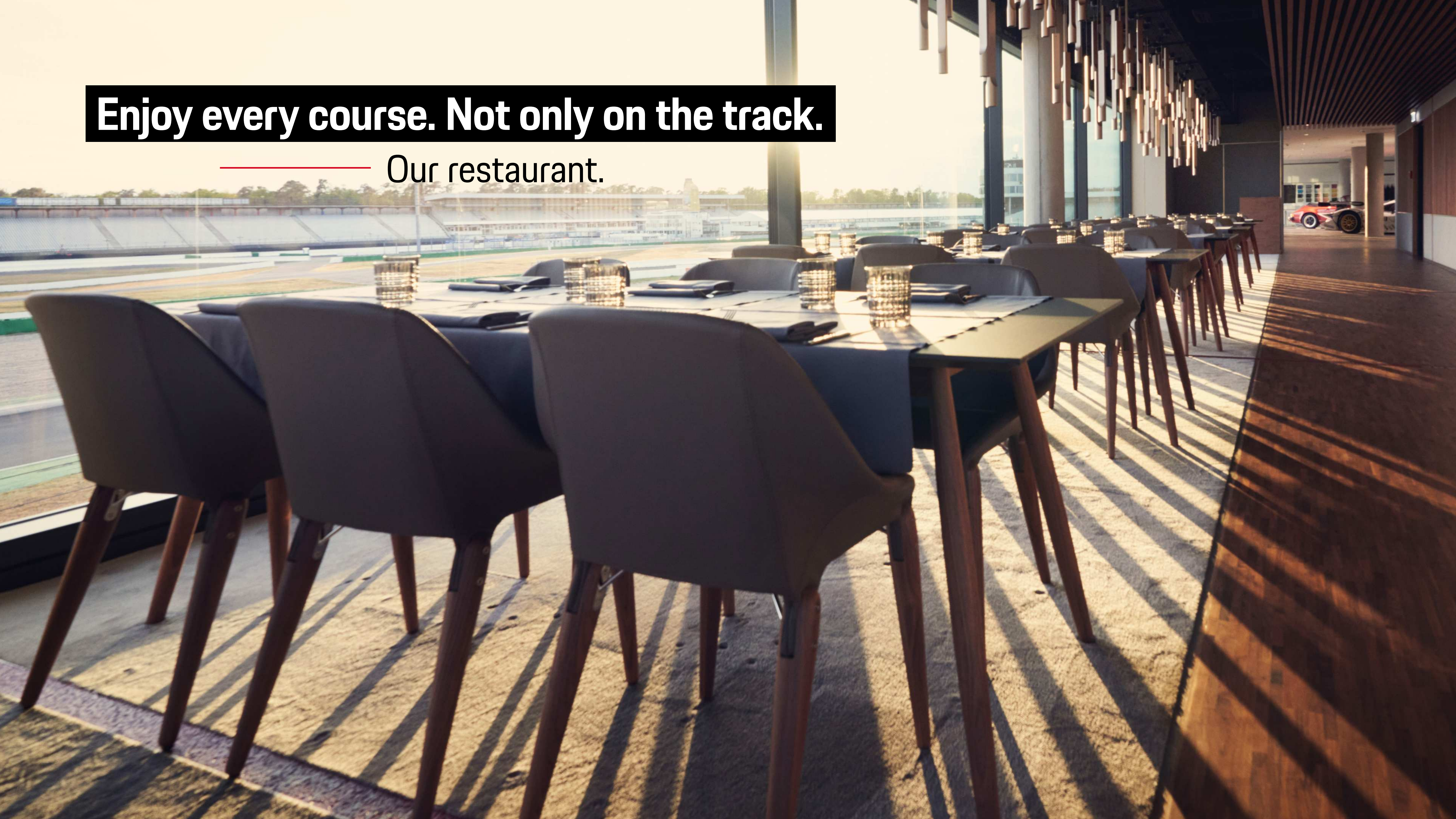
# OUR DRIVING-EXPERIENCES

Unforgettable Porsche moments.



**Enjoy every course. Not only on the track.**

— Our restaurant.



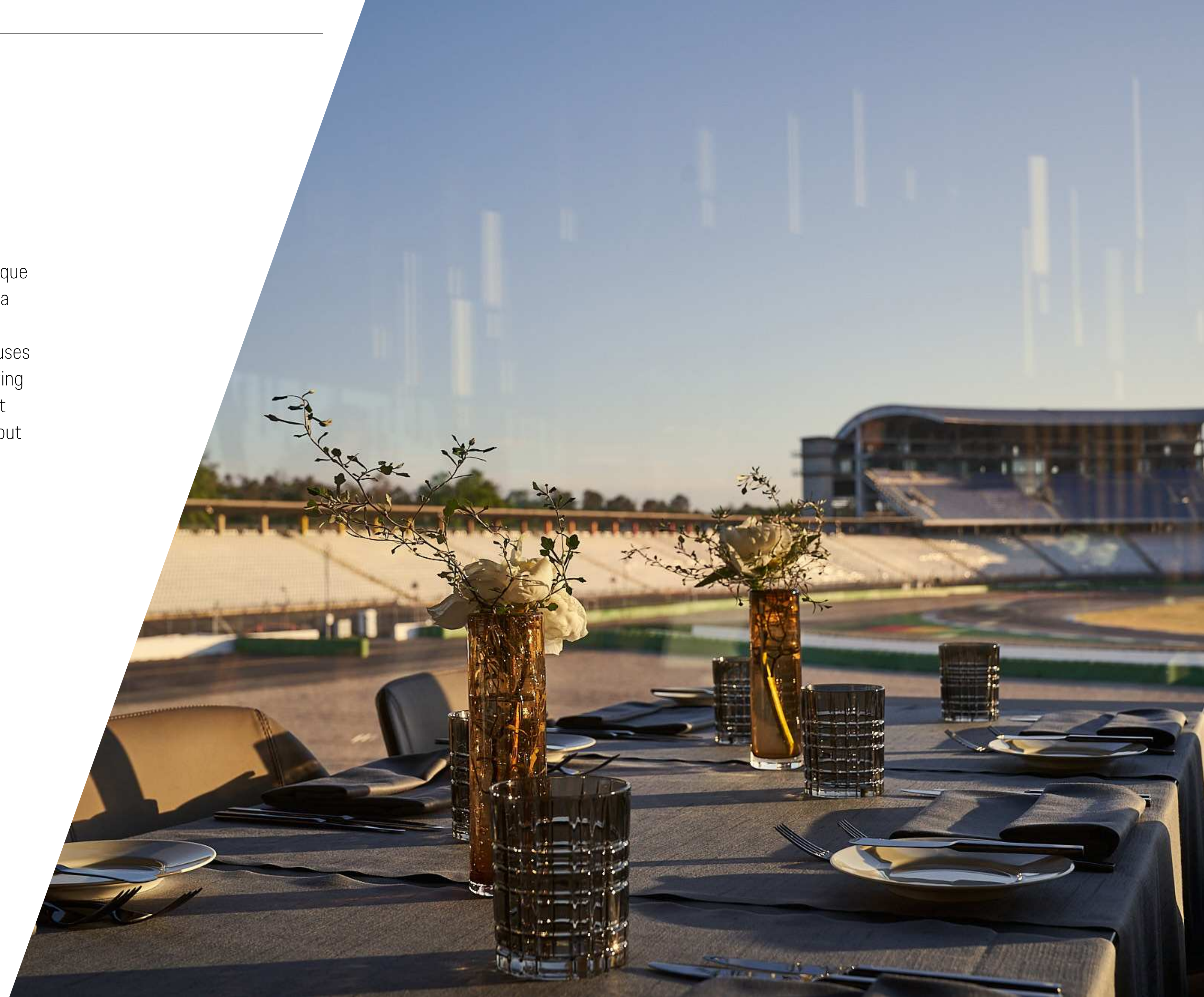


# A feast. For the eyes and the palate. —

Anyone who wants to create unique experiences must ensure unique impressions. This is why, when designing our restaurant, we held a competition among the most creative young interior designers. And with Igor lastrebov, we have implemented a concept that causes a double sensation: in the middle of the spectacular Hockenheimring with a panoramic view of the legendary Motodrom, our restaurant impresses with a state-of-the-art design that has been thought out right down to the tiniest detail.

Reservations can be made online at any time via Teburio.

Whether in a small group or in a large company:  
the sophisticated cuisine of our restaurant serves you  
and your guests varied delicacies – including with our  
catering service for all event areas and conference rooms.







---

**Breakfast:**

Enjoy a perfect start to your day. With our breakfast and brunch offers served in an exclusive ambience, a rich selection of delicacies awaits you ensuring you've plenty of strength for your next adventure.



---

**Lunch:**

Pit stop to refuel: in culinary terms, our lunch is right up there with our PS-oriented experiences. Enjoy exquisite dishes and the unique ambience.



---

**Pit Lane Café:**

Coffee, cake, corners. Enjoy sweet or savoury treats and a large range of soft and hot drinks in our café area. Whether as a first impression when you arrive or a short break in between: relax in Porsche style.



---

**Dinner:**

Expect top-level gastronomy with our dinner offer. With a view of our handling track you will turn into the home stretch of your day, reliving the highlights of your unique experience.





## BREAKFAST

For the perfect start.

*from € 25<sup>1</sup> per person*

# CULINARY HIGHLIGHTS

Each course an experience.



## LUNCH

Your pit stop at the Hockenheimring.

*€ 42<sup>1</sup> per person*



## BRUNCH

Breakfast or lunch? Why choose?

*€ 59<sup>1</sup> per person*

Visit our online shop now and make an reservation. [👉](#)



## EVENTS

Making events out of occasions.

*We would be pleased to make you an individual offer.*



## DINNER

Your day deserves this ending.

*€ 52<sup>1</sup> per person*



## PIT LANE CAFÉ

An upgrade for every break.

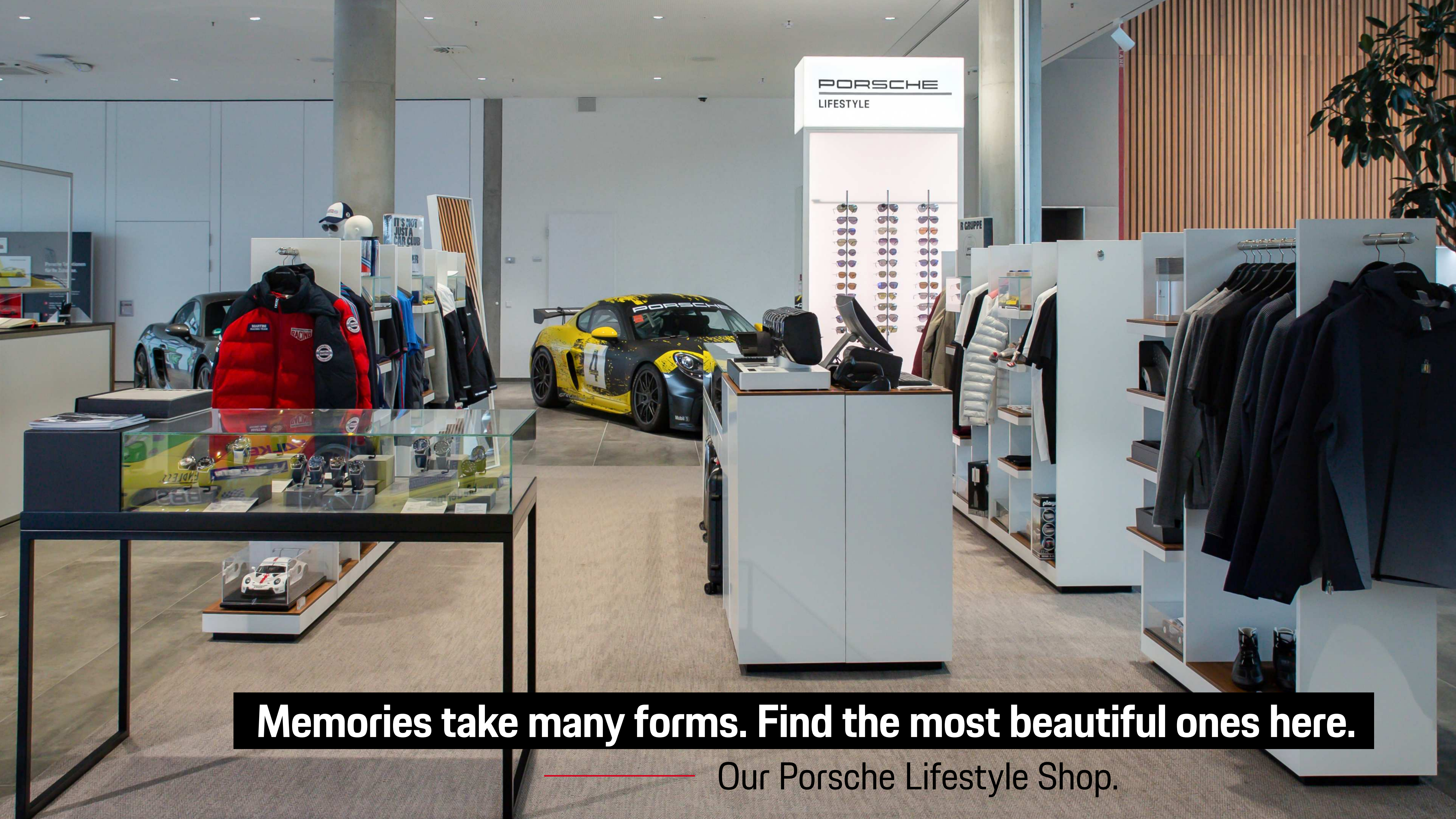
*from € 9,50<sup>1</sup> per person*

# MEETINGS & EVENTS

The perfect setting for your performance.

<sup>1)</sup> All prices are inclusive of the statutory value-added tax applicable at the time.





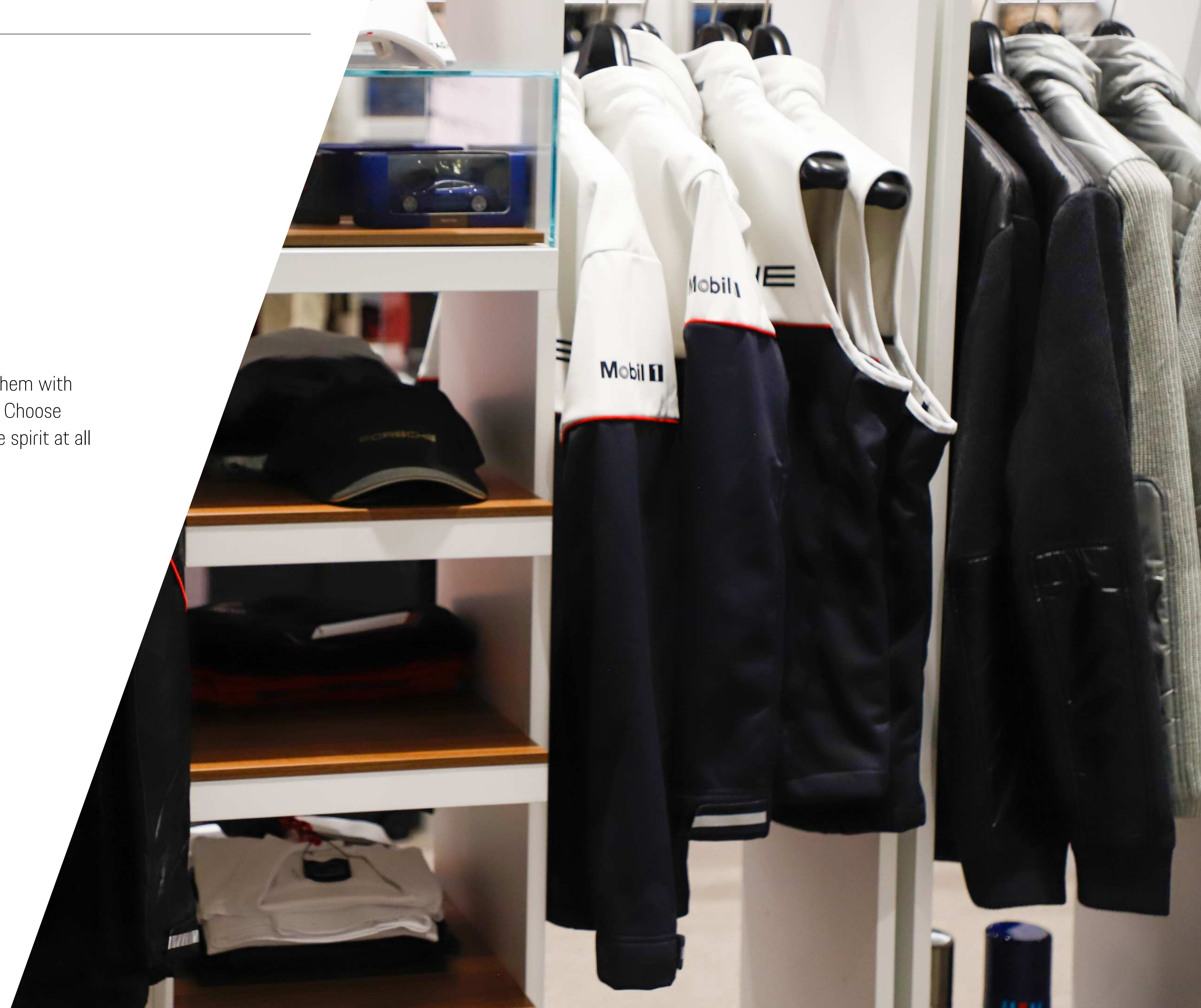
**Memories take many forms. Find the most beautiful ones here.**

Our Porsche Lifestyle Shop.



# Our Porsche Lifestyle Shop.

If only you could pack up the most beautiful experiences and take them with you. We make that possible: in our Porsche Driver's Selection shop. Choose from exclusive accessories that allow you to experience the Porsche spirit at all times. Even when you're far away from the road or the race track.







**Peak performance. For every occasion.**

— Meetings & Events.



# Meetings & Events.

---

Whether you are looking for impressive experiences for private or business purposes: the Porsche Experience Center Hockenheimring offers an exclusive combination of conference facilities and attractive supporting packages.

Our Customer Experience Centre covers an area of 4,500 m<sup>2</sup> on three levels. The building complex includes a 1,000 m<sup>2</sup> event space with function and meeting rooms that can be rented. In addition, a Porsche Selection shop as well as a café and restaurant form part of the Customer Experience Centre.

Thanks to flexible function rooms, event spaces and two panoramic roof terraces, you will discover that performance is important in all areas of the Porsche Experience Center.

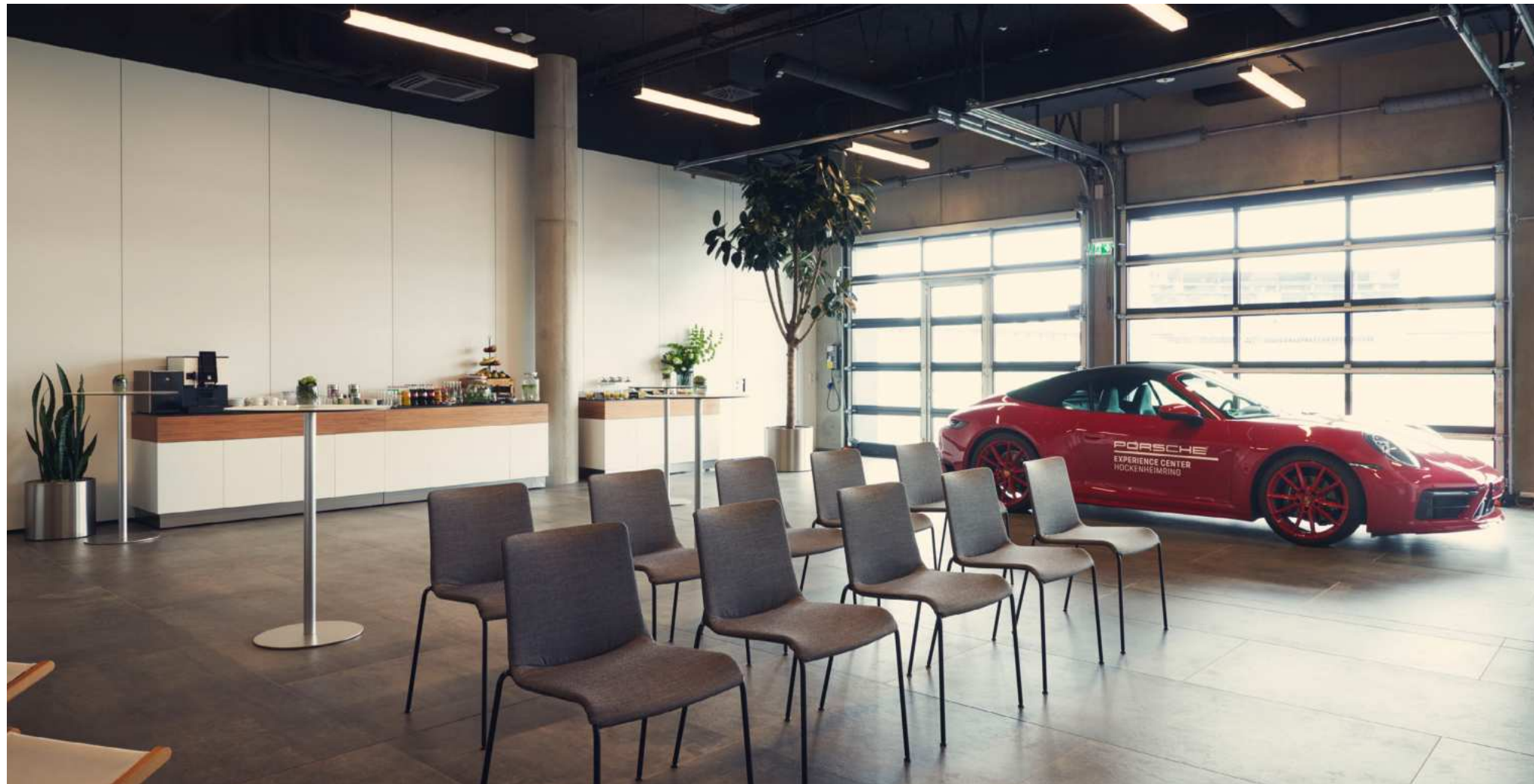




# The room concept: ————— be amazed.

As soon as you enter our Customer Centre it becomes clear: this stay will speed up your emotions. In our foyer, you will discover everything about our current Porsche models and legendary motorsport models. Here you can obtain all the information you need and completely immerse yourself in our models – up close and personal.

Furthermore, in addition to taking a break in our café, you can make flexible use of our 262 m<sup>2</sup> meeting rooms, including the latest presentation technology.



## Ground floor at a glance:

- Foyer
- Porsche Driver's Selection shop
- Pit Lane Café
- Meeting room
- Three flexibly configurable conference rooms
- Simulator room
- Two vehicle handover boxes that can be used as a workspace
- Canopy event space



# You should never hold up time travellers. —

On the first floor of our Customer Centre, we invite you on a journey through time: legendary race cars and historic models will cast a spell over you while, for example, you host a reception here, then enjoy our restaurant or hold a business meeting in the board room with a view of the Hockenheimring in an extraordinary atmosphere.



## First floor at a glance:

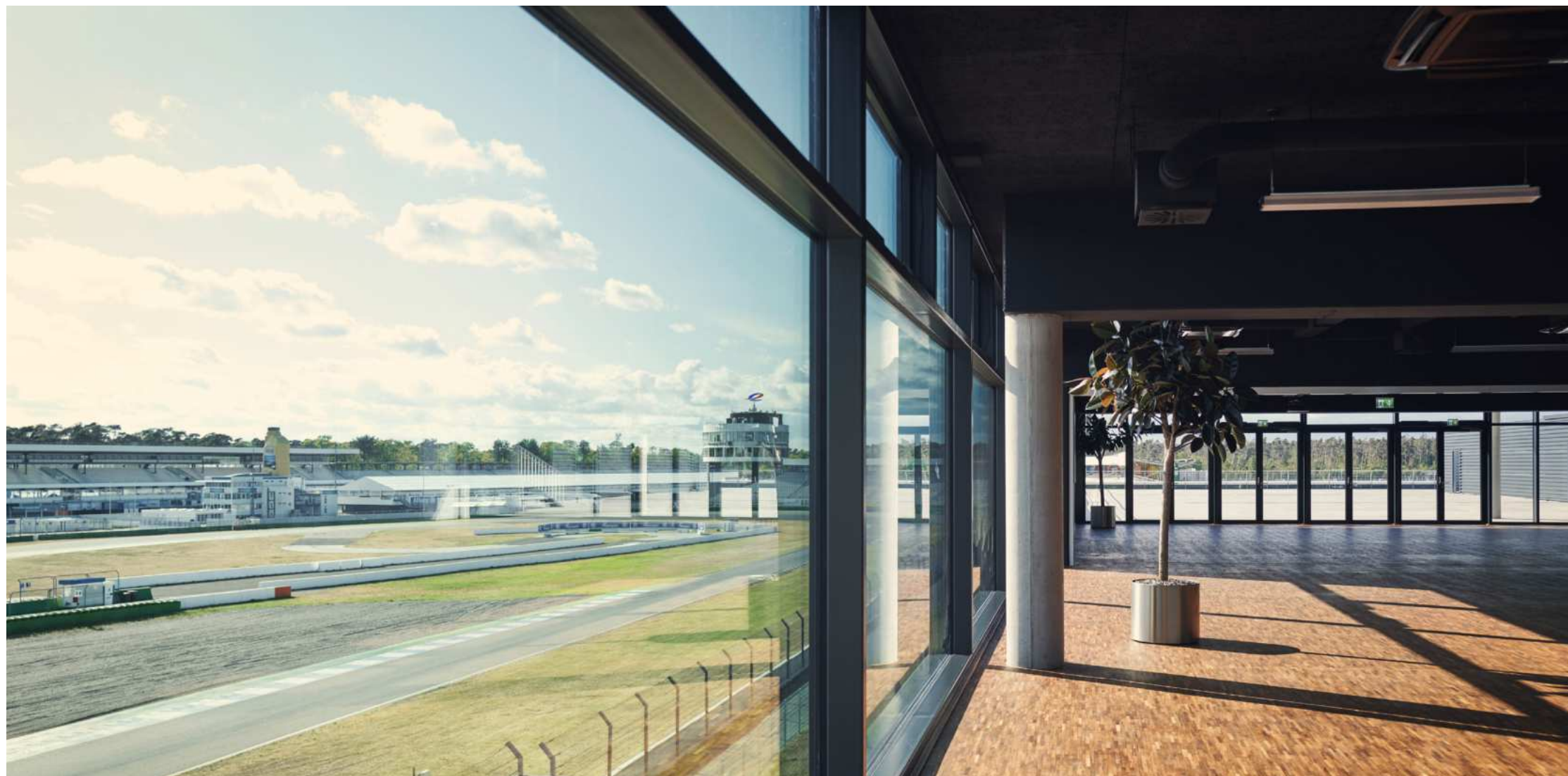
- Restaurant
- Meeting room/working space
- Pantry
- Board room
- Fitting Lounge
- Gallery



# Spectacular perspectives – for your events. —

On level 3, a 1,000 m<sup>2</sup> event space that can be used flexibly and modified offers you spectacular possibilities to make any kind of event a highlight.

From the roof terrace you are treated to a view of the Hockenheimring Grand Prix circuit, our handling track and the dynamic stretches. Here, you can relax and marvel at our current range of models as intended from day one – under full use on the race track.



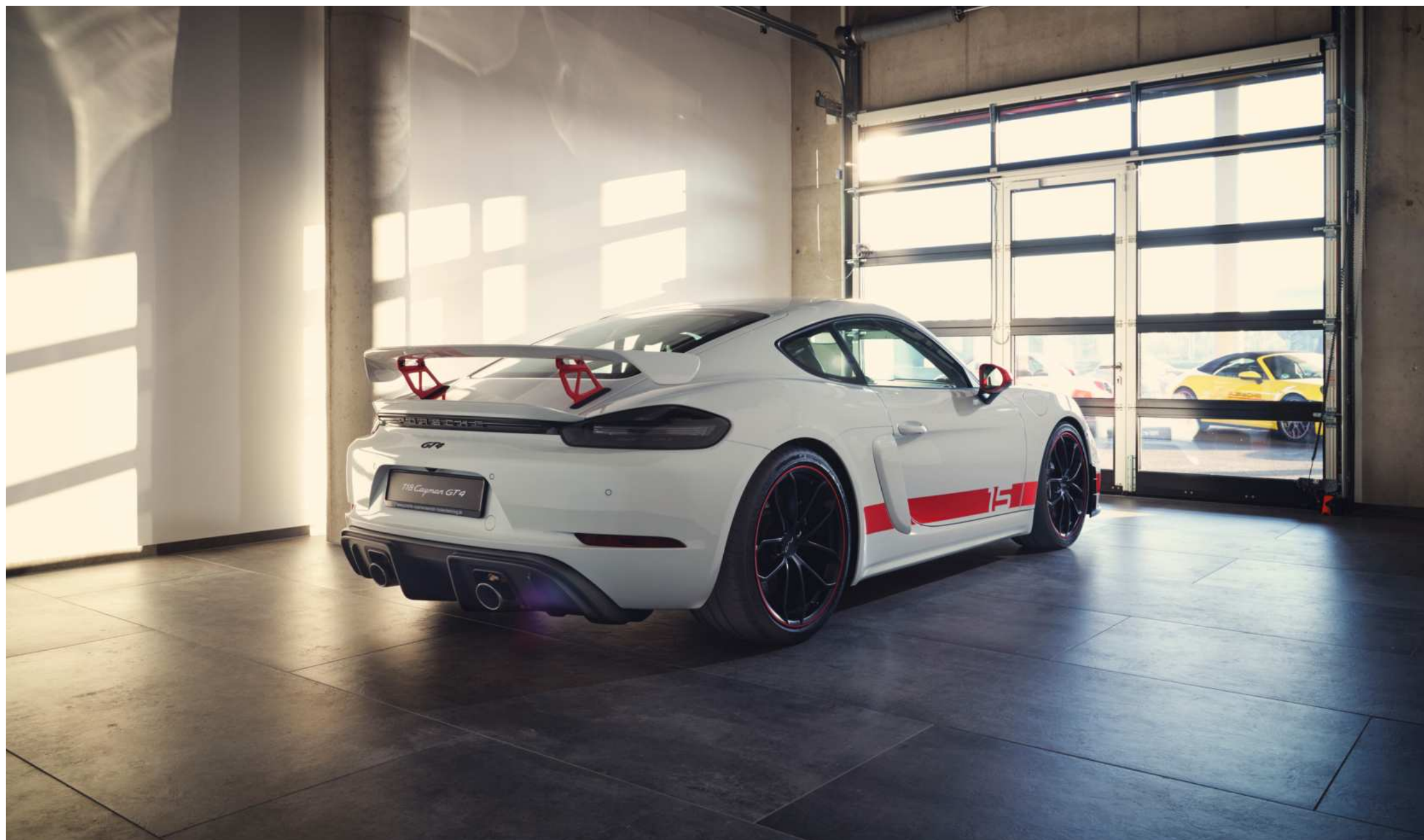
## Second floor at a glance:

- Three flexibly expandable event areas
- Catering area
- Two roof terraces



# The greatest ideas have always originated in garages. —

Creativity needs space to develop. The perfect environment: our handover boxes which we redesign flexibly for you – for example as a workshop location or simulator room. We are sure that the close-up motorsport atmosphere at the race tracks will be an inspiration for any kind of meeting.



---

For fuel consumption and CO<sub>2</sub> emissions, please refer to page 44.





## Everything. Except ordinary.

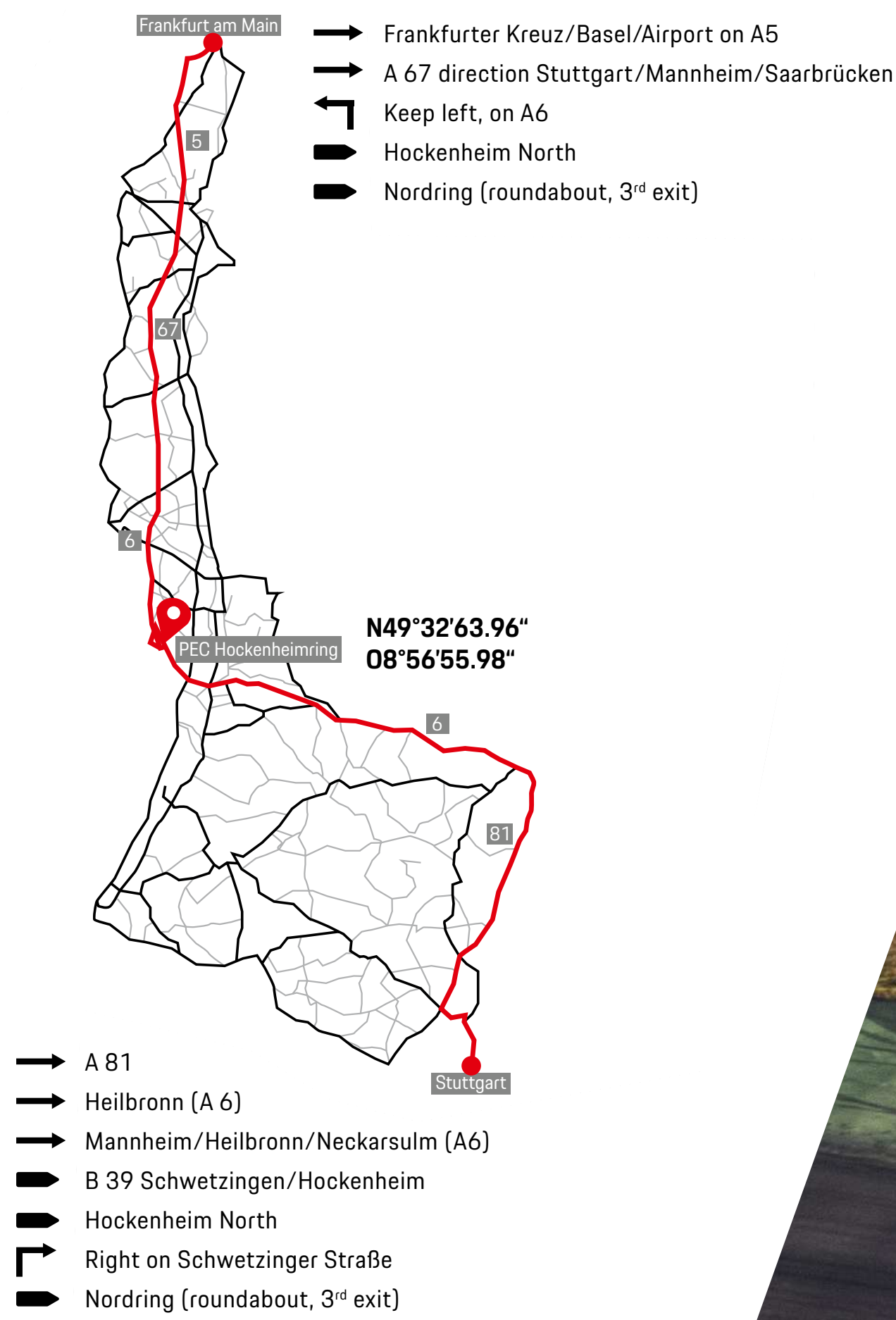
No matter how or with whom you want to spend your time, regardless of how you want to plan your Porsche experience, we will adapt to you and your individual wishes.

There is only one thing that is standard with us: we accelerate your emotions.

For fuel consumption and CO<sub>2</sub> emissions, please refer to page 44.



# Directions





# Contact —

Opening hours:

November – March:

Monday till Sunday: 08.30 – 18.00

April – October:

Monday till Sunday: 08.30 – 19.30

Events and visits only with appointment at:

+49 (0)711 911 32900

(availability by phone 08:30–18:00)

or

[info@porsche-experiencecenter-hockenheimring.de](mailto:info@porsche-experiencecenter-hockenheimring.de)



© Dr. Ing. h.c. F. Porsche AG, 2025

All text, images and other information in this catalogue are subject to the copyright of Dr. Ing. h.c. F. Porsche AG.

Any reproduction, duplication or other use is prohibited without the prior written consent of Dr. Ing. h.c. F. Porsche AG.

Porsche, the Porsche Crest, 911, Carrera, 718, Boxster, Cayman, Cayenne, Macan, Panamera, Taycan, PDK and other marks are registered trademarks of Dr. Ing. h.c. F. Porsche AG.

Porsche Experience Center Hockenheimring  
Am Motodrom 9–11  
68766 Hockenheim

[info@porsche-experiencecenter-hockenheimring.de](mailto:info@porsche-experiencecenter-hockenheimring.de)  
[www.porsche-experiencecenter-hockenheimring.de](http://www.porsche-experiencecenter-hockenheimring.de)

Effective from: 01/2025



# Technical Data

**718 Cayman GT4 RS (WLTP):**

Fuel consumption combined: 13.0 l/100 km; CO<sub>2</sub> emissions combined:295 g/km; CO<sub>2</sub> class: G;  
Status 02/2025

**911 GT3 RS (WLTP):**

Fuel consumption combined: 13.2 l/100 km; CO<sub>2</sub> emissions combined: 299 g/km; CO<sub>2</sub> class: G;  
Status 02/2025

Values are provided for comparison only. To the extent that fuel and energy consumption or CO2 values are given as ranges, these do not relate to a single, individual car and do not constitute part of the offer. Optional features and accessories can change relevant vehicle parameters such as weight, rolling resistance and aerodynamics which may result in a change in fuel or energy consumption and CO2 values. Vehicle loading, topography, weather and traffic conditions, as well as individual driving styles, can all affect the actual fuel consumption, energy consumption, electrical range, and CO2 emissions of a car.